



with John Manfredo, Chief Operating Officer

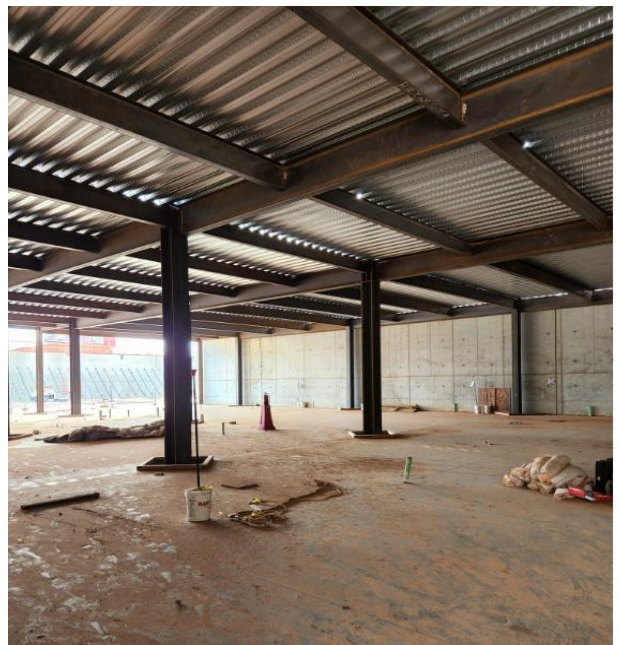


April 2022

Please enjoy our monthly newsletter provided to keep you informed and up-to-date on our Inspire Health project progression! This newsletter will provide a recap of recent events and highlight upcoming milestones for the HealthPlex, Free-standing Emergency Department Plus, and our Porter Campus revitalization and construction projects

HealthPlex

- Can you believe we are 12 months away from moving into our new Ambulatory Care Center at the HealthPlex!
- The picture to the right shows the metal decking installation on top of the steel beams
- Another important crane will soon be installed on the construction site
- A tower crane will help install major components for our parking garage
- Tower cranes are hard to miss—they often rise hundreds of feet into the air
- The tower crane is used to lift steel, concrete, large tools, and a wide variety of other building materials



Future Pharmacy Department!



Three Crawler Cranes working on the HealthPlex.

Please direct any questions or comments regarding our Inspire Health project to:
InspireHealth@nrh-ok.com



Norman Regional Nine First Floor



Norman Regional Nine Second Floor

- **October 24, 2022 will be the first patient day for Norman Regional Nine!**
- We currently anticipate starting our Transition and Activation activities inside Norman Regional Nine towards the middle of August
- After the construction team releases the building to us we will begin configuring the Pyxis machines, installing lounge TVs, installing art work, moving furniture, computers and printers. Internal signage will follow, we'll be doing drills and many other fun activities before we see our first patient on October 24!

Please direct any questions or comments regarding our Inspire Health project to:
InspireHealth@nrh-ok.com



- We have entered the design development phase for the BHC!
- During the design development phase (often referred to as DD) the architects work with the super users to incorporate all the details and specifications required for construction

Be sure to visit <https://inspirehealthok.com> for more information!

Looking forward,

A handwritten signature in black ink that reads "John P. Manfreda".

*Chief Operating Officer
Norman Regional Health System*

Please direct any questions or comments regarding our Inspire Health project to:
InspireHealth@nrh-ok.com