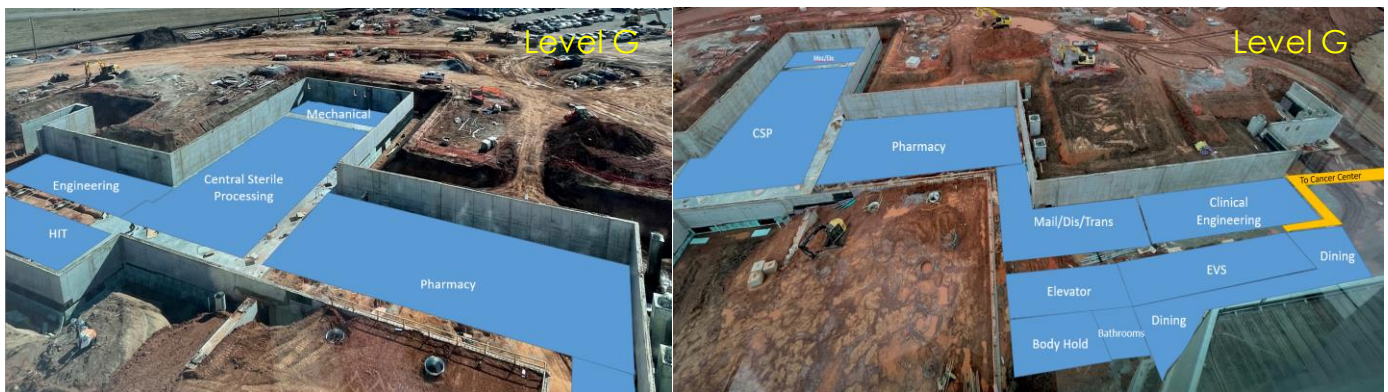




February 2022

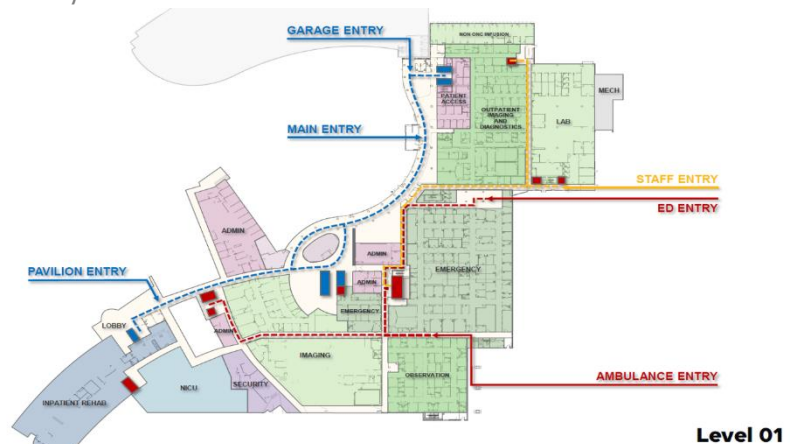
Please enjoy our monthly newsletter provided to keep you informed and up-to-date on our Inspire Health project progression! This newsletter will provide a recap of recent events and highlight upcoming milestones for the HealthPlex, Free-standing Emergency Department Plus, and our Porter Campus revitalization and construction projects

HealthPlex



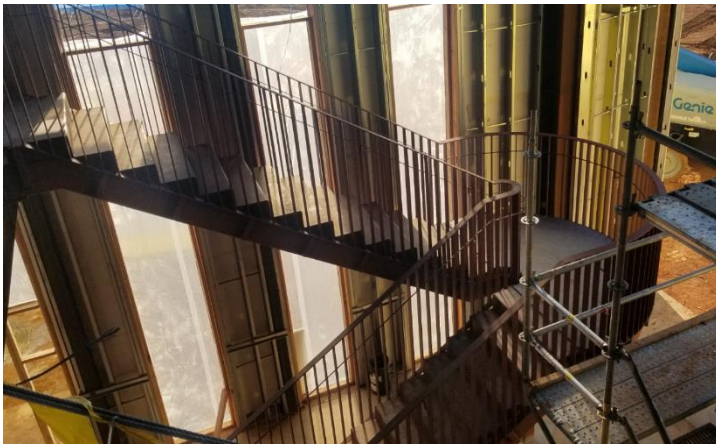
Garden level construction continues on schedule

- The HealthPlex construction marked another milestone with the first 'slab-on-grade' (SOG) pour on the Garden Level. Slab-on-grade is the first step in the foundation process. The SOG was poured where the future Central Sterile Processing department will be located (see above).
- The entrance options for patients, visitors, ambulances, and healers is depicted in the plan to the right. During transition and activation activities, the flow of vehicles through this entrance will be thoroughly tested and adjusted as identified for maximum traffic pattern efficiency.
- The HealthPlex has undergone another temporary change to continue to make way for the Inspire Health project. A new temporary wall was erected next to the Daily Grind that encloses the old main entrance. The construction team will now begin to remove components of the glass and old main entrance to build the new space! The Chapel is will also soon be relocated inside a temporary structure in the second floor Women's and Children's lobby area.



Entrance Options on Level 01

- Healers can view construction during Viewing Events on the eighth floor in the Innovation Studio. Construction Viewing Events will occur at 7:30 a.m. and 3 p.m. the first and third Thursdays of the month as well as at 7:30 a.m. on the second Saturday of the month.



Actual progress of Norman Regional Nine compared to rendering

- We are six months away from getting the 'keys' to the Norman Regional Nine building and eight months away from our first patient day!
- The planning teams are working to finalize the finishing touches on Norman Regional Nine. Small supplies, office equipment and furniture are just some of the many items being ordered to assure we are ready to go when we open.



- The construction of the Porter Health Village was kicked off with the bittersweet demolition of the Auxiliary's Nu-N-Nuf Thrift Shop, which served our community well for decades. The demolition will make way for the City of Norman's Senior Wellness Center.
- We are currently finalizing processes with the title companies and the City of Norman. Once these processes are completed the construction can begin on the Senior Wellness Center. We anticipate this construction to start sometime in April.



Demolition of Nu-N-Nuf Thrift Shop

Be sure to visit <https://inspirehealthok.com> for more information!

Looking forward,

John P. Manfreda

Chief Operating Officer
Norman Regional Health System

Please direct any questions or comments regarding our Inspire Health project to:
InspireHealth@nrh-ok.com