



with John Manfredo, Chief Operating Officer



March 2021

Please enjoy our monthly newsletter provided to keep you informed and up-to-date on our Inspire Health project progression! This newsletter will provide a recap of recent events and highlight upcoming milestones for the HealthPlex, Free-standing Emergency Department Plus, and our Porter Campus revitalization and construction projects.

HealthPlex

- **Important to note:** Parking Lot A—planned to be completed in late June—will be dedicated healer parking once all make ready work is completed.
- Over the life of the Inspire Health project you may notice some healers have been required to relocate their offices, or even part of their departments, to allow for construction.
- For example, our Emergency Department Supervisor, Stephanie Gehrke, will relocate her office to Sara McMillan's office in the Imaging area. Sara, our Centers of Excellence Clinical Manager, will relocate to the Porter campus.
- Additionally, we anticipate times where we will need to have more than one healer per office.
- Flexibility will be key as we work through the plans to expand the HealthPlex campus. Any questions or concerns can be directed to InspireHealth@nrh-ok.com.
- Finally, great progress continues for both the inside and outside of the HealthPlex Campus. As a reminder from our January newsletter, this is the make ready phase of construction.



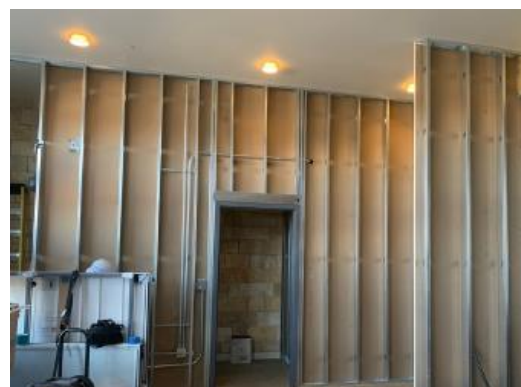
Parking Lot A Construction Underway!



Healer offices and work spaces will be impacted by construction



Temporary EMSStat Entrance



Temporary ED Walk-in Entrance

Please direct any questions or comments regarding our Inspire Health project to:
InspireHealth@nrh-ok.com

Free-standing Emergency Department Plus (FSED+)

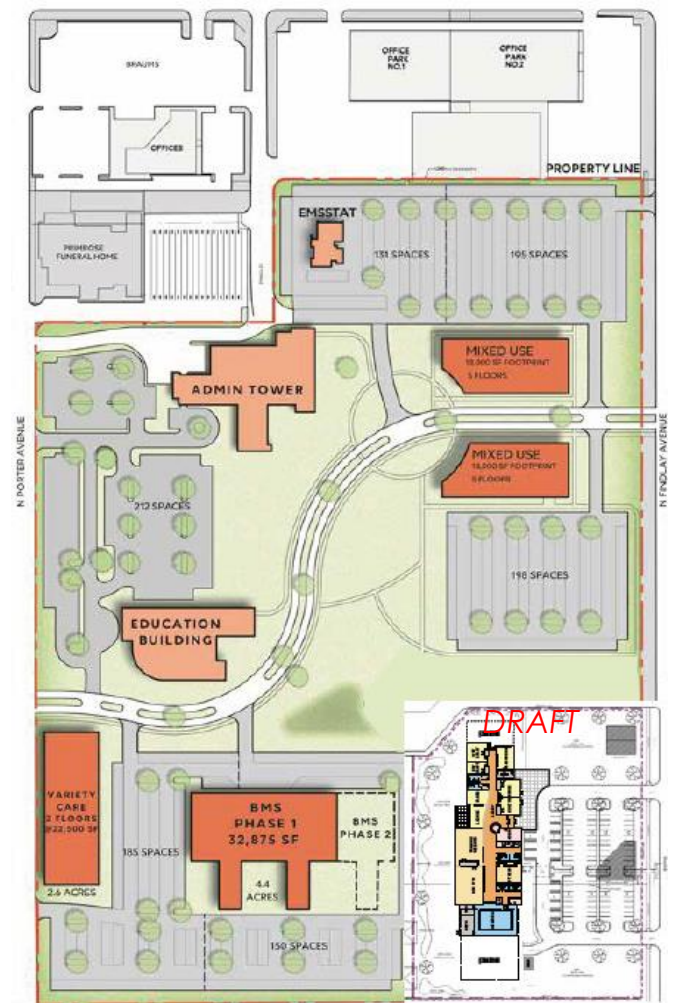
- Last week we had several great sessions with the signage experts from HGA.
- The image to the right represents the current *DRAFT* of the FSED+ entry.
- This is in *DRAFT* form because we are at the point now in the project where we are working with the signage engineers (both internal and external signage).
- It is possible that signage reflected in this image will change.
- We reviewed wayfinding strategies for both the FSED+ and the HealthPlex. Wayfinding strategies will include: language of direction giving, visitor pre-arrival tools, campus arrival, navigating the campuses, parking, navigating halls and walls, and much more.
- The plan is to review and thoughtfully consider each decision point for our patients and visitors, and then to assure our signage is clear and easy to follow.
- The Free-standing ED+ now has a name! Norman Regional Nine will be the name of this new facility.
- The groundbreaking for Norman Regional Nine has been set as well. Mark your calendars for May 20, 2021 at 10 a.m.



FSED+ Entry

Porter Campus

- The Porter Campus revitalization project will see a new free-standing Behavioral Medicine hospital built in the south portion of the 30 acre property.
- The southeast portion is currently dedicated to the City of Norman Senior Wellness Center.
- Last week members of our Inspire Health project team met with the architect team and employees of the City of Norman working on the Senior Wellness Center.
- The updated plan to the right is very preliminary and will most likely change as the team works through the design process.
- We wanted to share the great progress being made with the Porter Health Village.



Porter Health Village Master Plan

Looking forward,

John P. Manfreda

Chief Operating Officer
Norman Regional Health System

Please direct any questions or comments regarding our Inspire Health project to:
InspireHealth@nrh-ok.com