



with John Manfredo, Chief Operating Officer



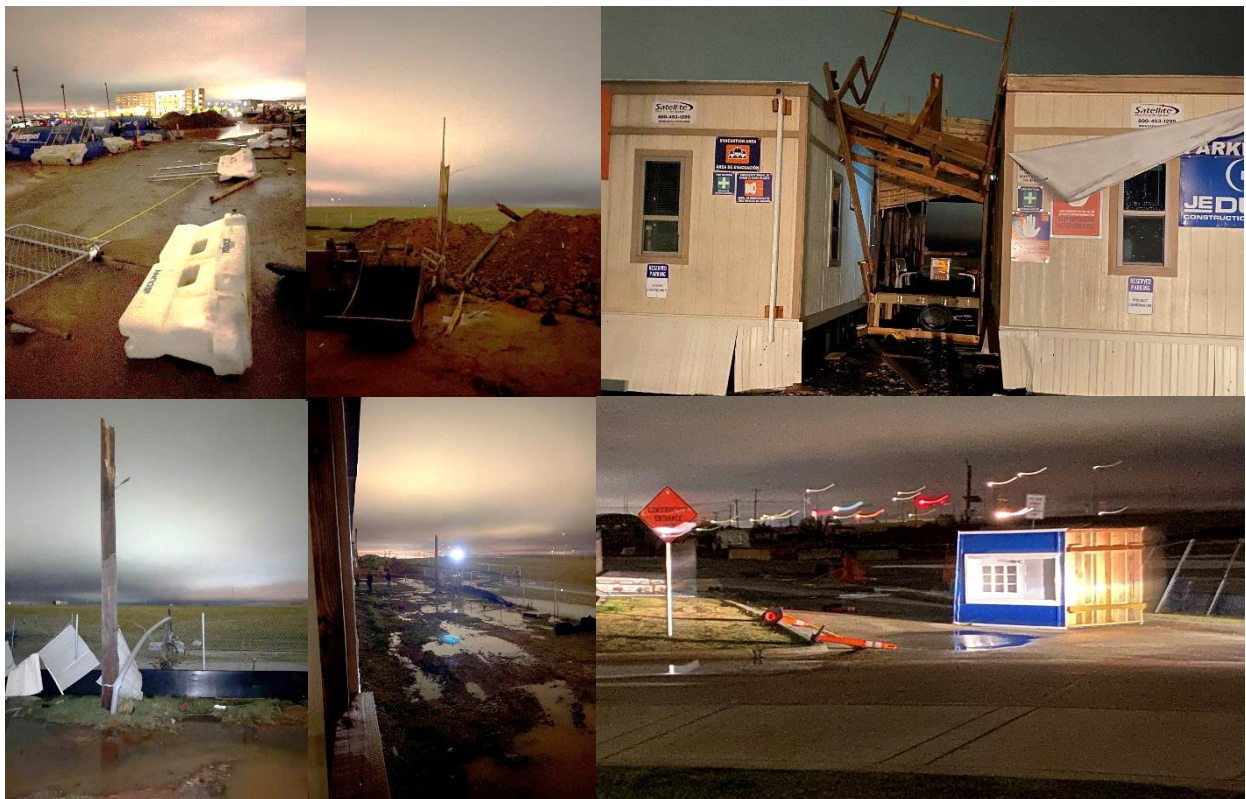
October 2021

Please enjoy our monthly newsletter provided to keep you informed and up-to-date on our Inspire Health project progression! This newsletter will provide a recap of recent events and highlight upcoming milestones for the HealthPlex, Free-standing Emergency Department Plus, and our Porter Campus revitalization and construction projects

HealthPlex

Another Damaging Storm!

- In April of this year a damaging storm impacted our Porter and HealthPlex campuses. Many healers who were at home or working sustained damage to their vehicles and/or homes. Six months later, on October 10, another wave of severe storms came through Norman leaving a trail of destruction in its wake.
- The HealthPlex project site sustained damage but was quickly repaired by the JE Dunn project team.



Please direct any questions or comments regarding our Inspire Health project to:
InspireHealth@nrh-ok.com

October 15, 2021

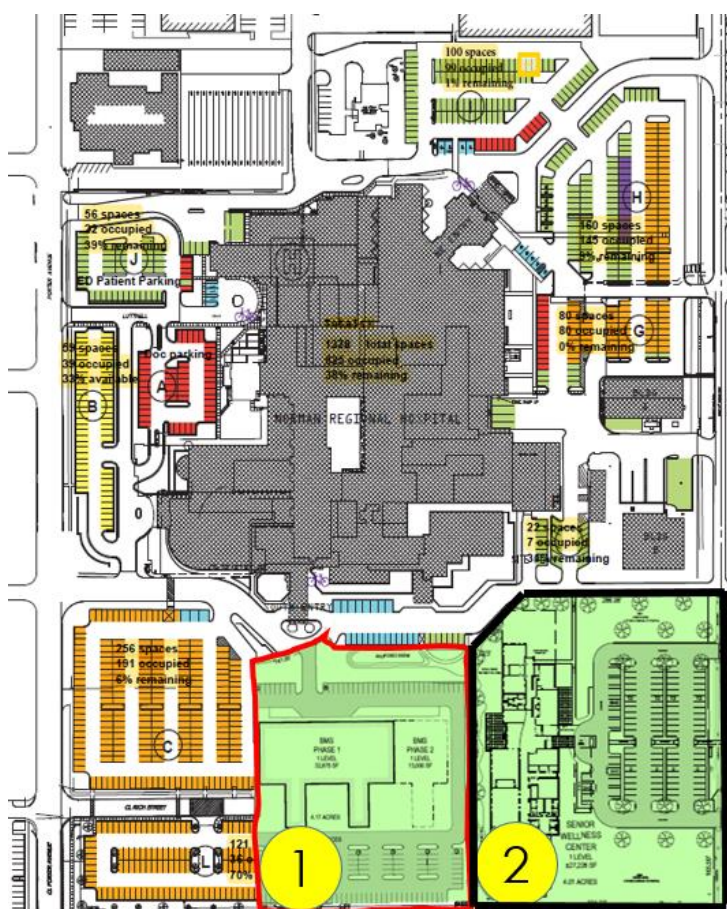


Norman Regional Nine Construction Continues - Topping Out Ceremony set for Nov. 11 at 4 p.m. at the FSED campus. Mark your calendars!

Behavioral Health Center

Porter Health Village

- Progress continues on our Behavioral Health Center (BHC)
- Construction for the BHC and Senior Wellness Center is currently targeted to begin in April.
- There will be an impact to parking on the Porter Campus. Trevor Wall, Director of Inspire Health Program, is working with a team to propose potential temporary parking solutions. Stay tuned! More information will be shared shortly about future and temporary parking during the Porter Health Village construction.



Porter Campus map showing future sites of Behavioral Health Center (#1) and Senior Wellness Center (#2)

Be sure to visit <https://inspirehealthok.com> for more information!

Looking forward,

John P. Manfreda

Chief Operating Officer
Norman Regional Health System

Please direct any questions or comments regarding our Inspire Health project to:
InspireHealth@nrh-ok.com